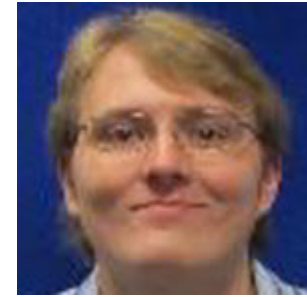
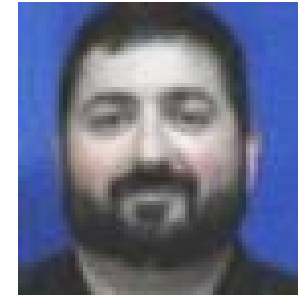


# SAWE SOUTHEAST REGION CHAPTER – LUNCH AND LEARN



Featured Topic:

***Mass Properties Challenges in Aircraft Interior Outfitting – Function vs. Fashion***



Presented by:

**Tom Tanner and Ben Flood**

Mass Properties Group  
Gulfstream Aerospace Corporation

**When:** Thursday, March 19<sup>th</sup>, 2020 at 11:30 AM

**Where:** Gulfstream Aerospace Corporation  
Savannah, GA RDC IV 1st Floor – Lift

**Cost:** \$5 for Members, \$8 for Non-Members

**Purchase Online:** <http://www.sersawe.org/#Events>

**Contact:** Ross Campbell 912-251-2627

[Gregory.Campbell@gulfstream.com](mailto:Gregory.Campbell@gulfstream.com)



**All you Care to Eat Pizza and Drinks!**

**Sponsored by:**

**SOCIETY OF ALLIED WEIGHT ENGINEERS**

*SOUTHEAST REGION CHAPTER*

*Aerospace • Marine • Offshore • Land Vehicle • Allied Industries*